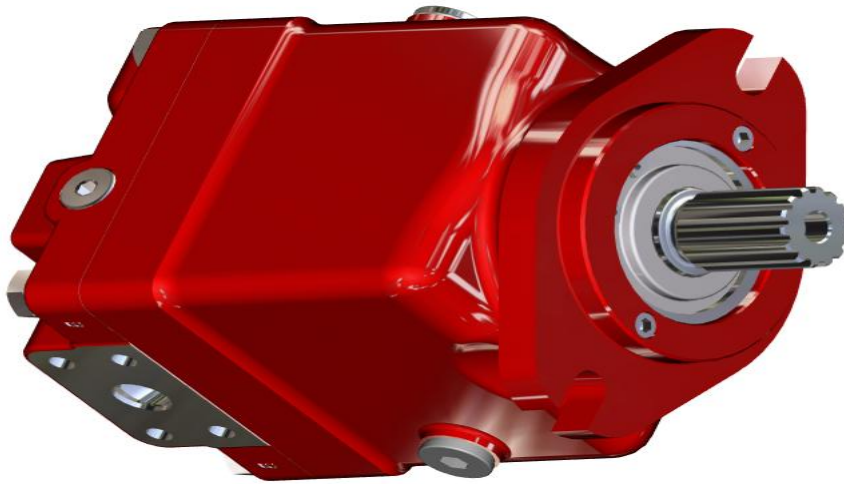


medium size axial piston fixed displacement pump

# PAP

 **A+S HYDRAULIC**



click on pictures below to see enlarge 3d model

## Product Tech News

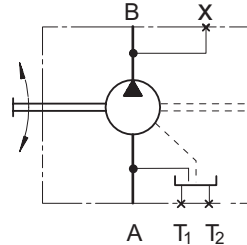
# Hydraulic pumps type PAP

## medium size axial piston fixed displacement pump



### Symbol

B service line port  
 A suction port  
 T<sub>1</sub>, T<sub>2</sub> drain port  
 (plugged)  
 X measures port



### OPTIONS

- » Swash plate
- » Flange mount
- » Side ports
- » Shafts- splined

### EXCELLENCE

- » Smooth low - speed operation
- » compact design
- » long service life
- » high power density

### SPECIFICATION DATA

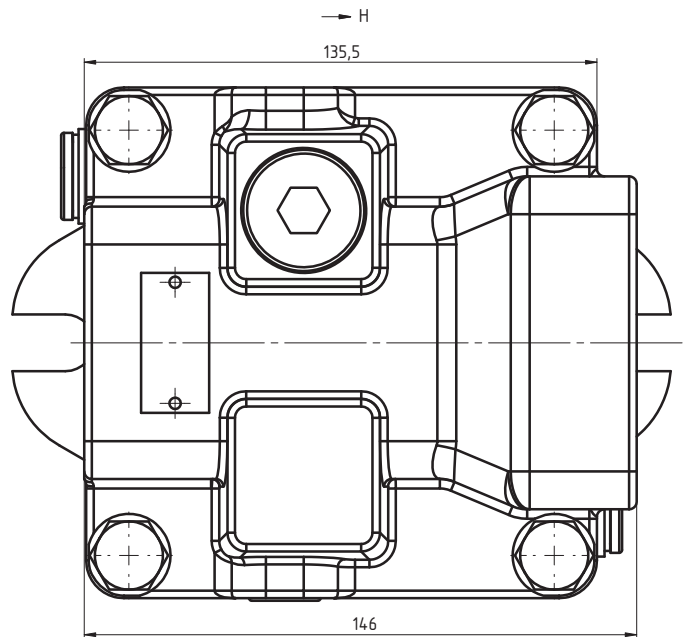
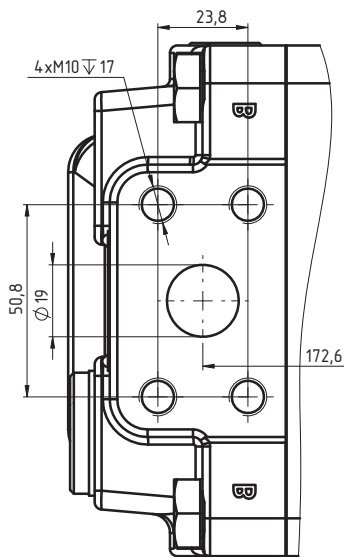
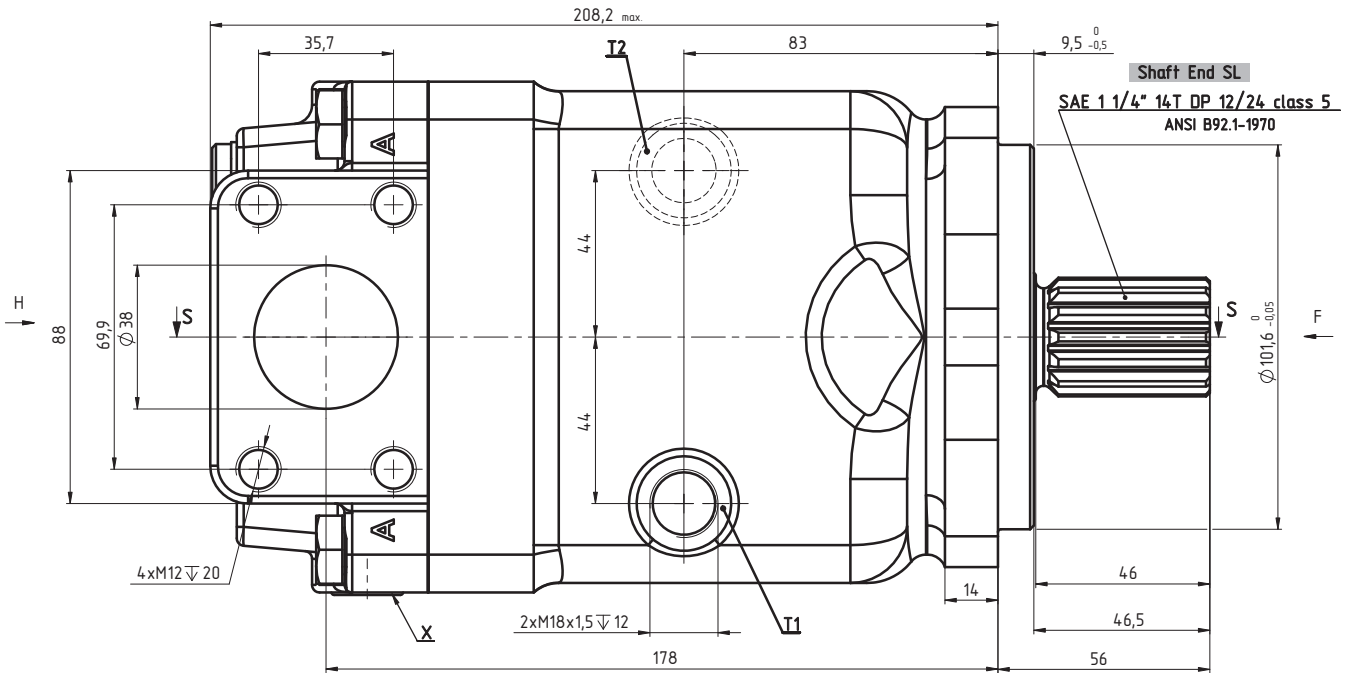
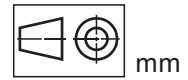
Type	PAP 35	PAP 40	PAP 46
<b>Displacement,</b> cm. <sup>3</sup> /rev. [in. <sup>3</sup> /rev.]	35 [2.16]	40 [2.44]	46 [2.80]
<b>Max. Speed,</b> [RPM]	Cont.	2685	2675
	Peak*	3372	3375
<b>Max. Torque,</b> daNm [lb-in]	Cont.	22.3 [1970]	25.5 [2250]
	Peak*	25.1 [2220]	28.7 [2540]
<b>Power , kW [HP]</b>	Cont.	62,7 [84]	71 [98]
	Peak*	88 [118]	101 [135]
<b>Max. Pressure</b> bar [PSI]	Cont.	400 [5800]	400 [5800]
	Peak*	450 [6526]	450 [6526]
<b>Max. Oil Flow,</b> lpm [GPM]	Cont.	94 [24,8]	107 [28]
	Peak*	118 [31,1]	135 [35]
<b>Premissible shaft load daN [lb]</b>	axial Fa=200 [450], radial on request		
<b>Min. speed [RPM]</b>	500		
<b>Max. Pressure in housing,</b> bar [PSI]	2 [30]		
<b>Weight kg [lb]</b>	20,5 [45]		

\* Peak load: the permissible values may occur for max. 1% of every minute.  
 The values shown are valid for an absolute pressure of 1 bar at the suction inlet with mineral oil.

1. Peak speed and peak pressure must not occur simultaneously.
2. Recommended filtration is per ISO cleanliness code 20/16. A nominal filtration of 25 micron or better.
3. Recommend using a premium quality, anti-wear type mineral based hydraulic oil, HLP(DIN51524) or HM(ISO6743/4).  
 If using synthetic fluids consult the factory for alternative seal materials.
4. Recommended minimum oil viscosity 70 SUS [13 cmi/s] at 122°F [50°C].
5. Recommended maximum system operating temperature is 180°F [82°C].
6. To assure optimum pump life fill with fluid prior to loading and run at moderate load and speed for 10-15 minutes.

**DIMENSIONS - PAP**

SAE B 2-Bolt flange,  
spigot diameter 101,6 mm - BC 146 mm



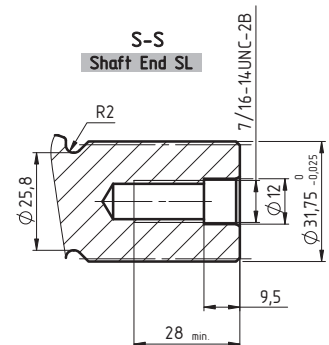
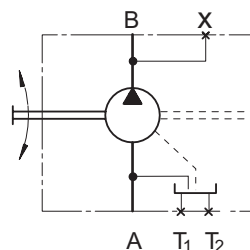
**Connections**

**Port B Service line port - SAE 3/4"**  
(6000 psi) high pressure series

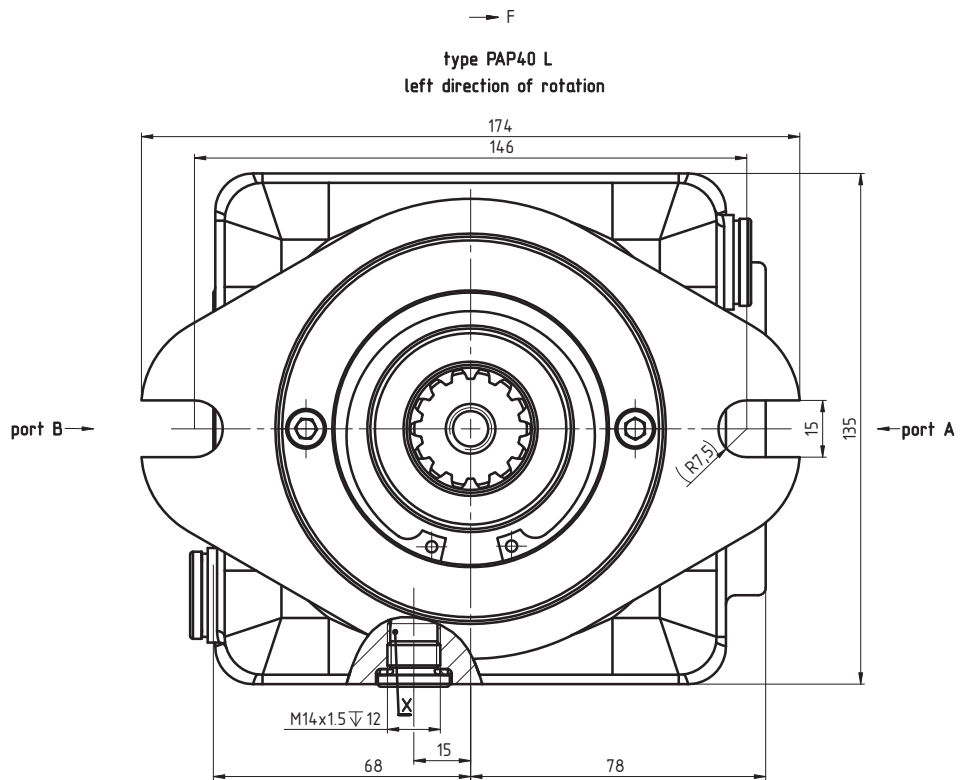
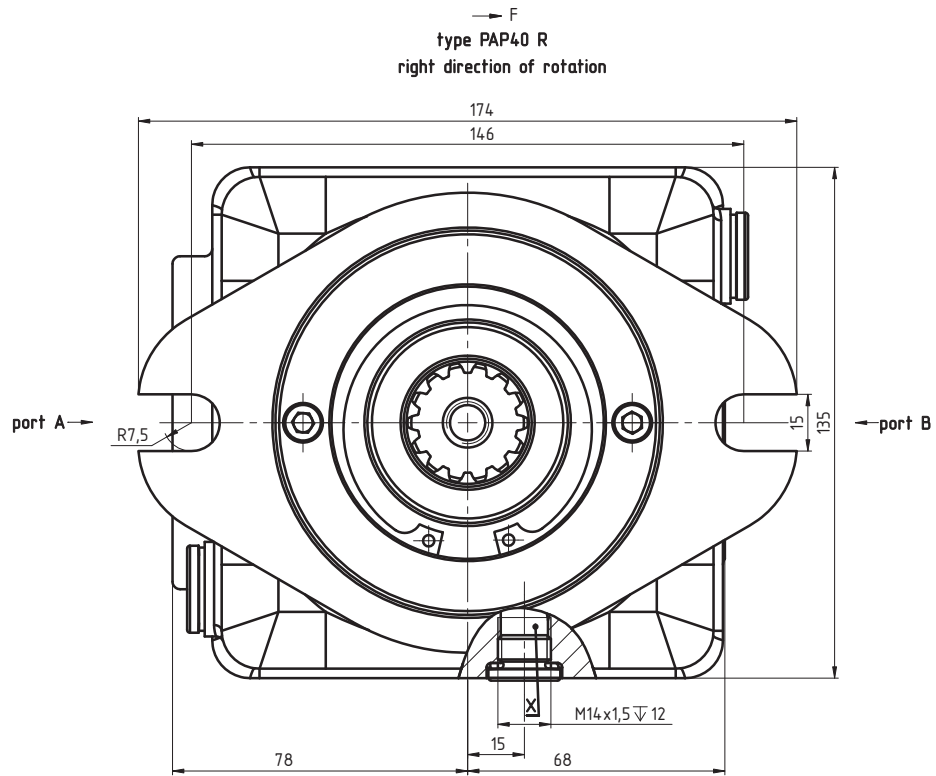
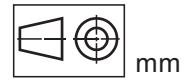
**Port A Suction port - SAE 1 1/2"**  
(500 psi) standart series

**T1,T2 Drain or oil filling port**  
M18x1,5 15 deep

**X Measure port**  
M14x1,5 12 deep



**DIMENSIONS - PAP**



## ORDER CODE

	1	2	3	4	5	6	7
<b>P A P</b>							

**Pos.1 - Mounting Flange**

omit - SAE B - 2-Bolt flange  
spigot diameter 101,6 mm - BC 146 mm

**Pos.2 - Displacement code**

<b>35</b>	- 35 cm. <sup>3</sup> /rev. [2.16 in. <sup>3</sup> /rev.]
<b>40</b>	- 40 cm. <sup>3</sup> /rev. [2.44 in. <sup>3</sup> /rev.]
<b>46</b>	- 46 cm. <sup>3</sup> /rev. [2.80 in. <sup>3</sup> /rev.]

**Pos.3 - Shaft Extensions**

<b>SL</b>	- $\varnothing$ 1 1/4" [31,75mm] 14T Splined ANSI B92.1-1970, 12/24
-----------	--

**Pos.4 - Direction of rotation**

<b>R</b>	- Right
<b>L</b>	- Left

**Pos.5 - Special Features**

omit - none

**Pos.6 - Option [Paint]\***

omit	- no Paint
<b>P</b>	- Painted
<b>PC</b>	- Corrosion Protected Paint

**Pos.7 - Design Series**

omit - Factory specified

Notes: \* Color at customer's request.

The hydraulic pumps are mangano phosphatized as standard.

The information placed at your disposal in this brochure can be changed without any notification.

Please be sure that your copy is the newest one.



68, Kozloduy St., 6100 Kazanlak, Bulgaria

Tel.: ++359 431 65167

Fax: +359 431 64114

E-Mail: msh@ms-hydraulic.com